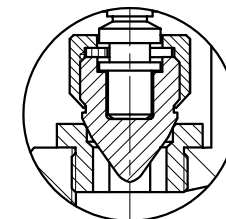


Rep.	DESIGNATION
1	CORPS/BODY
2	SIEGE/SEAT
3	CLAPET/DISC
4	TIGE/STEM
5	ECROU DE CLAPET/DISC NUT
6	VERROU DE CLAPET/LOCKNUT WASHER
8	CHAPEAU/BONNET
9	GARNITURE D'ETANCHEITE/PACKING
10	FOULOIR/GLAND
11	BRIDE DE FOULOIR/GLAND FLANGE
14	TIRANT/GLAND FLANGE STUD
15	ECROU DE TIRANT/GLAND FLANGE NUT
16	DOUILLE/BUSHING
17	VOLANT/HANDWHEEL
18	ECROU DE VOLANT/HANDWHEEL NUT
19	PLAQUE D'IDENTIFICATION/NAME PLATE



Clapet pointeau en option
Needle disc option

Matériel conforme à NF M87.412- BS5352
Matériel in acc. with BS 5352 - NF M87.412



CS 3422
112,114 avenue de Vendôme
41034 BLOIS Cedex
FRANCE

ROBINET FORGE A SOUPAPE TETE INCLINEE Y PATTERN FORGED GLOBE VALVE

Sie 150 - 300 - 600 - 800 - 900 - 1500 - 2500
Class 150 - 300 - 600 - 800 - 900 - 1500 - 2500

BW NPT SW HUB BRIDE / FLANGE FF RF RTJ